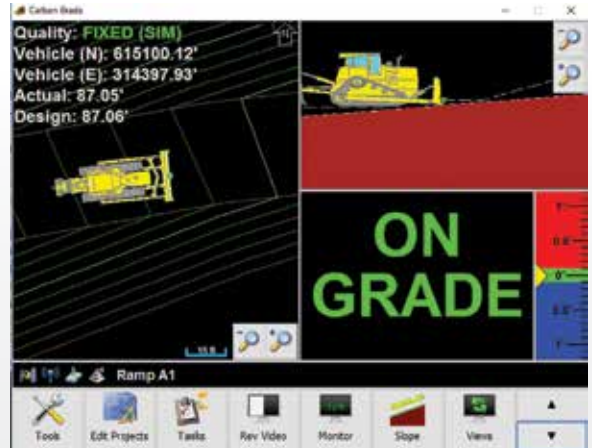


Carlson Grade for Dozers

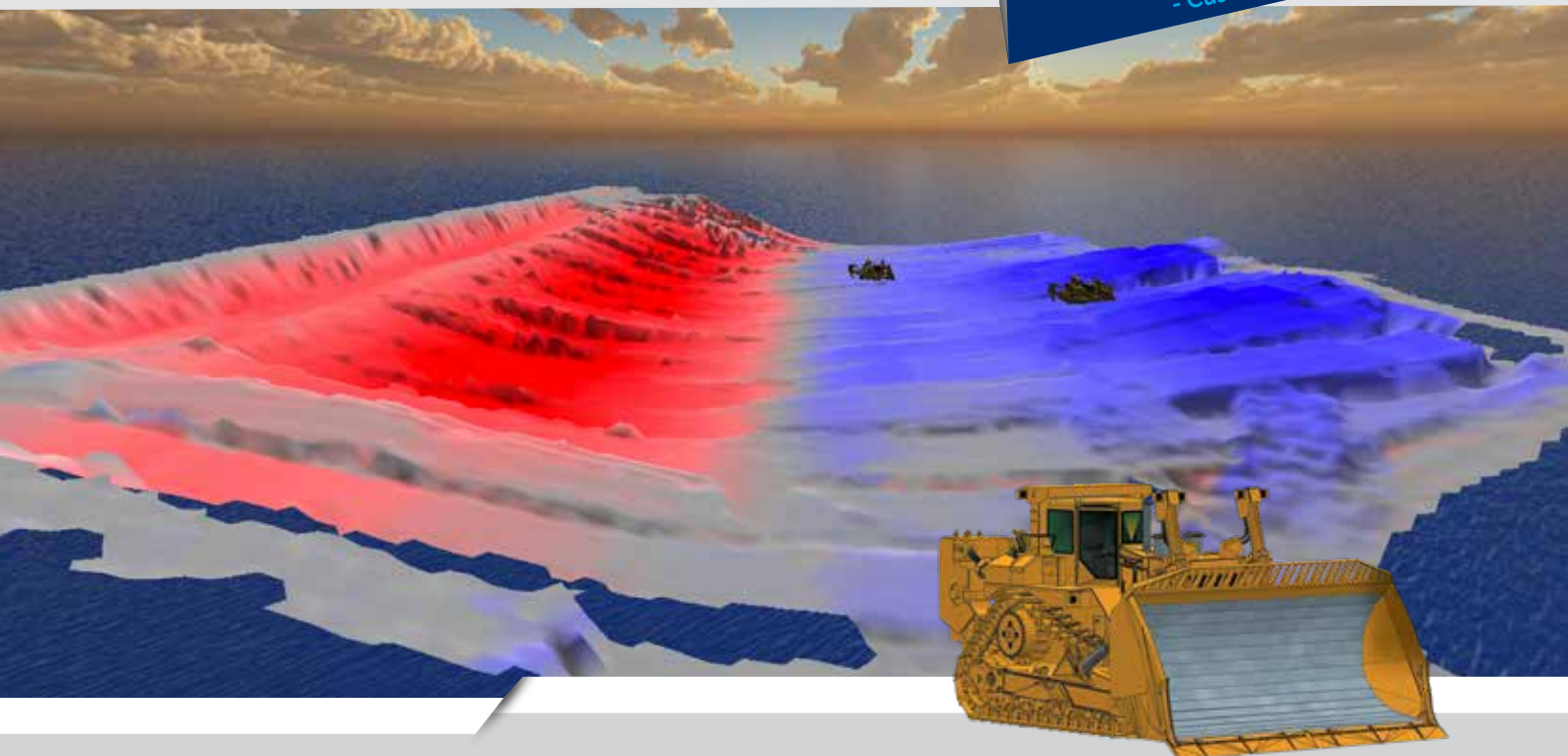


Features

- Consistent user interface across all solutions
- Flexible and easy to use interface
- Multiple view options available in profile, section and plan
- Directly import from open CAD and Carlson platforms
- DWG, DXF, TN3, GC3, LN3, TIN, GRD
- Track machine utilization and task analysis
- NTRIP and VRS compatible
- Able to handle large surface files
- Real-time machine system view and troubleshooting capability from anywhere in the world
- Peer to peer communication and information sharing capability between all machines



Experts in Machine Control
Applications since 1996
- Mining - Landfill - Piling - Dredging -
- Construction - Contract Drilling -
- Custom Applications -



Learn more: www.advancedmappingsolutions.ca
or contact at: info@advancedmappingsolutions.ca

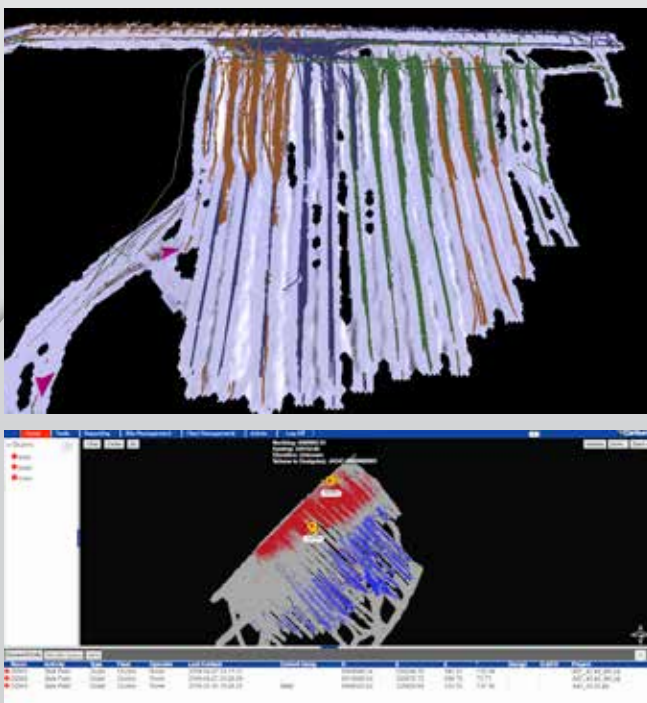
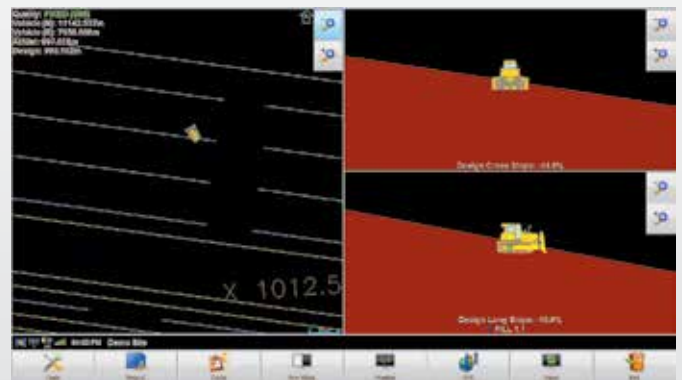
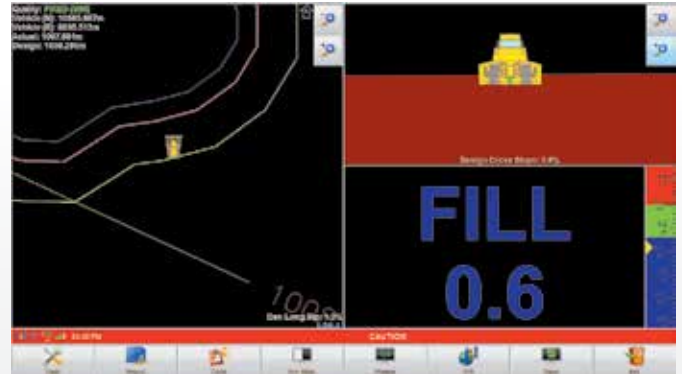
BREAK NEW GROUND

Safety Benefits

- Increase operator situational awareness through proximity warnings between machines and fixed assets
- Increase operator awareness by utilizing 2D and 3D watch zones and warning zones
- Increase safety for surveyors and engineers by reducing survey time in the field

Benefits

- Increase productivity with better push strategies for production dozing
- Recognize considerable cost savings in reclamation projects
- Build simple or complex pads and slopes in the field. flat/single/dual/multi
- Mine to design and reduce rehandle
- Update surfaces and cut/fill color map real time across the entire project
- Provide your operator with more information
- Stockpile safety and volume management



Carlson Command

A comprehensive data storage and control software package that gives management and engineering a view of what is happening in real-time by moving pit maps, dashboards, and KPI screens. All information is stored for real time and port process reporting and analysis as well as playback of events.

- Productivity analysis
- Data management of single or multiple sites
- Direct machine to machine communication and data sharing with live and historical 3D machine playback
- In cab monitoring and training from office
- Full cut/fill color map with real-time surface updates
- Create and customize tasks, delays and down codes

Learn more: www.advancedmappingsolutions.ca or contact at: info@advancedmappingsolutions.ca